

**3MSTONE
MARBLE**

www.3mstone.com



- 3M STONE is one of the leaders of Marble and Granite in the Egyptian market.
- Our range of products includes wide varieties of the Egyptian marble and granite like Galala, Sunny, Silvia, Melly Grey, Sinai Pearl, Katrina,..Etc.
- We believe in the power of art and nature; we blend them to develop final fascinating pieces, talking to customers through color, finish, and design. Being our partner, you enrich your business with magnificent stone pieces and nonnegotiable level of high quality and commitment.
- We have many representatives all over the world.
- We have our Cairo-based factory that includes all the top of the range machinery necessary: gang-saws, automatic and semi-automatic polishers, automatic and semi-automatic cutting machines.
- Our main customers are people within the building and construction industry, factories, merchants, importers & exporters, architects, executing engineers, decorative engineers, antique lovers, collectors and also the end-customer who wants to add style, quality, and value to his home by adding marble or granite.
- We also have the capability to manufacture the stone according to the customer's specifications. This enables us to cater for the large range of preferences requested by our buyers from various countries and nationalities.

3MSTONE CORE BUSINESS.

(Manufacturing process of marble)

From: Quarries



To: Your Home



Extraction



During the extraction process, massive cube-like pieces of marble are cut out of the ground and transported from the quarry. To minimize the risk of cracks, fissures and other aesthetic damage to the stone, fabricators use a process known as "wire sawing" to gently separate the marble. First, two 3-inch wide holes are drilled perpendicularly to each other. Once the holes connect, a heavy-duty,

Wire embedded with artificial diamonds is fed through and secured to a flywheel, forming a loop. A powerful engine applies massive torque to the flywheel, which circulates the diamond-embedded wire at a very fast rate. Since diamond is much harder than the marble, the friction quickly wears it away, leaving a smooth cut plane.

After wearing all the way through, another perpendicular hole is drilled and the process is repeated, cutting away the other vertical plane.

For the horizontal plane, the wire saw cuts about 80 percent of the marble away, leaving a circle in the center remaining. At this point, the wire is removed and an hydraulic excavator machine forces a wedge into the horizontally-cut planes to break the vertical plane free. Finally, a crane loads the piece onto a truck or rail car for a

Processing



After the blocks are extracted from the quarry, they'll go through further processing to match their intended purpose. For tiles, the marble is cut into stone billets and polished to a smooth sheen. Marble slabs for construction or sculpture are cut using diamond wires or a gang saw, which uses multiple diamond-tipped blades to slice a marble block into more manageable slabs. Often, a resin is applied to fill in cracks in the marble's surface. After polishing, only 1 percent of the surface will be coated in resin, maintaining the purity and beauty of the finished stone.



Our Factory



Finishing Specs

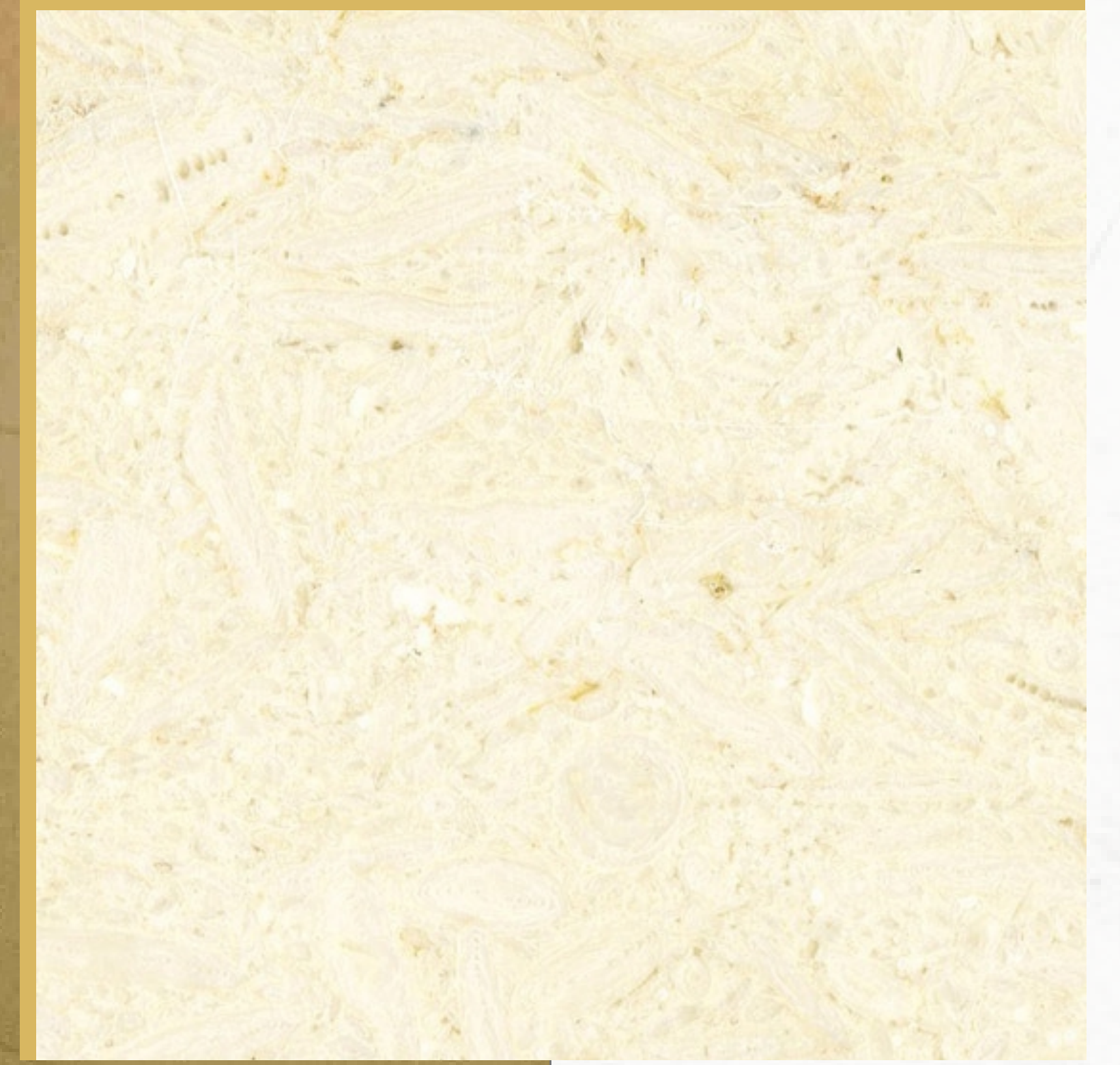
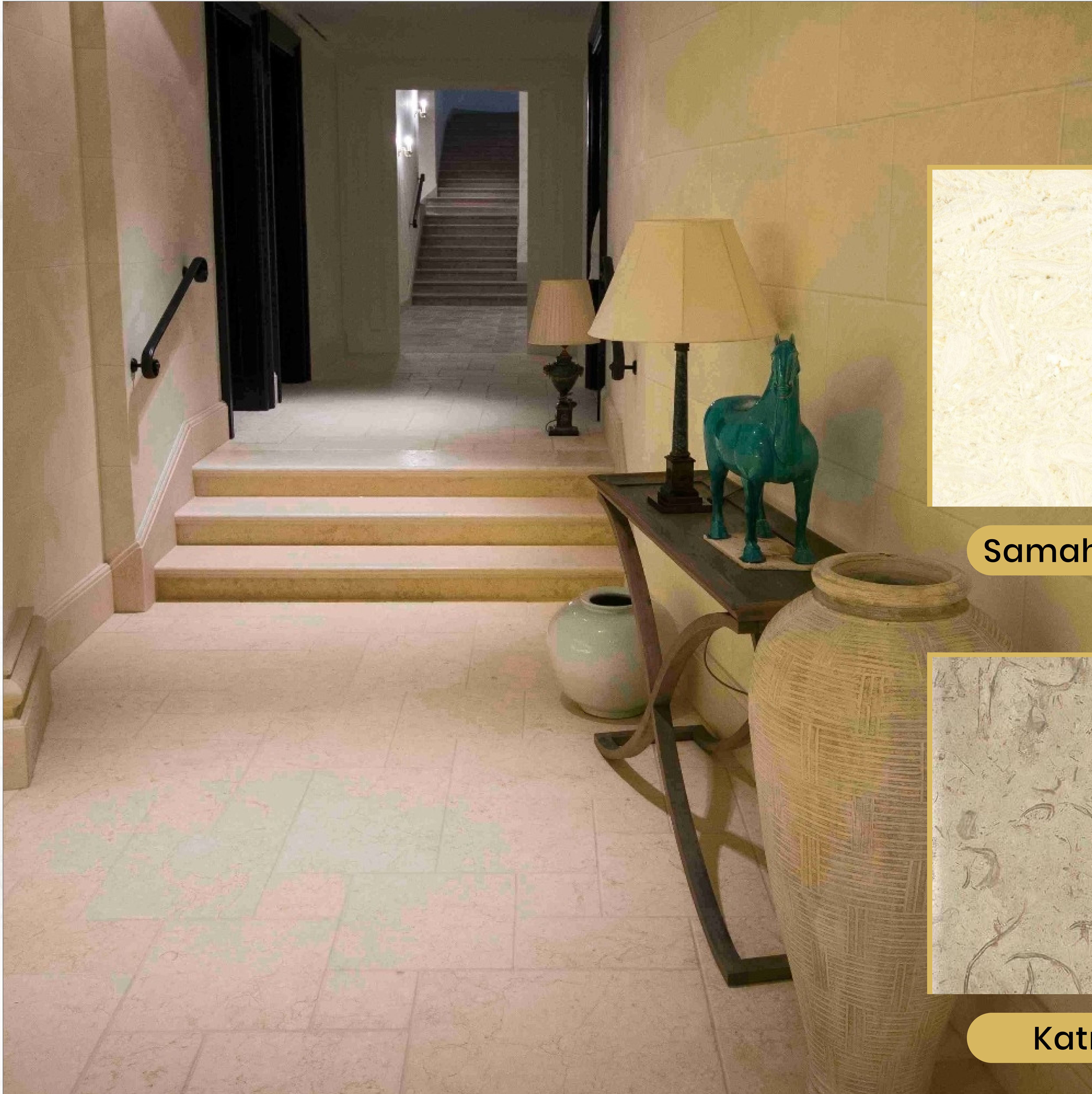


Stone product surface can be finished by different ways according to different application, such as Polished, Unpolished, Honed, Antique, Bush-Hammered, Brushed, Flamed, Split-face, Tumbled, Sandblasted, Leatherhead and Rigato. For the finishing of all of our forms, we are carefully measuring the degree of polish, checking the uniformity of finish application and also ensuring uniform texture.

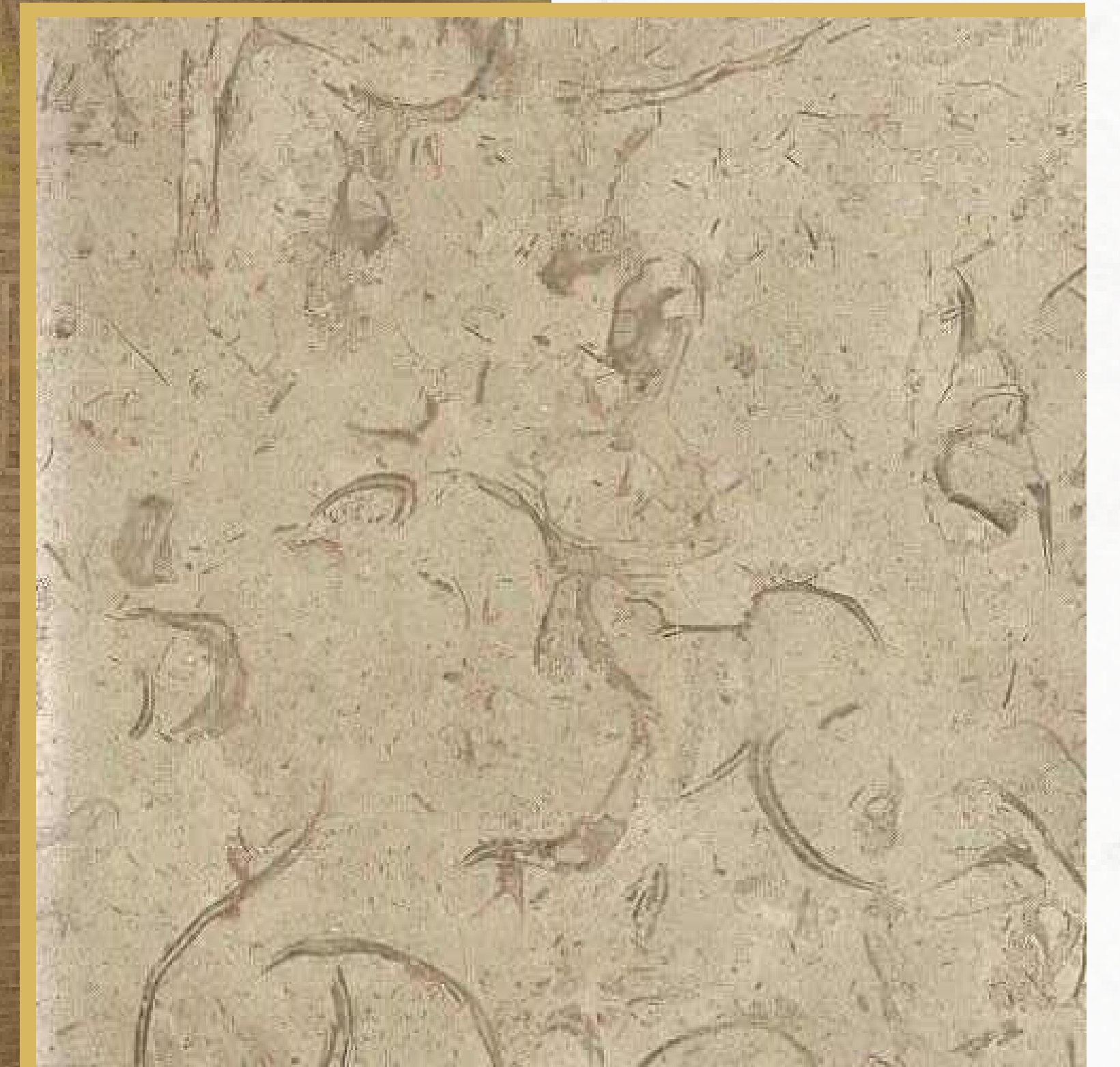


Materials

Marble



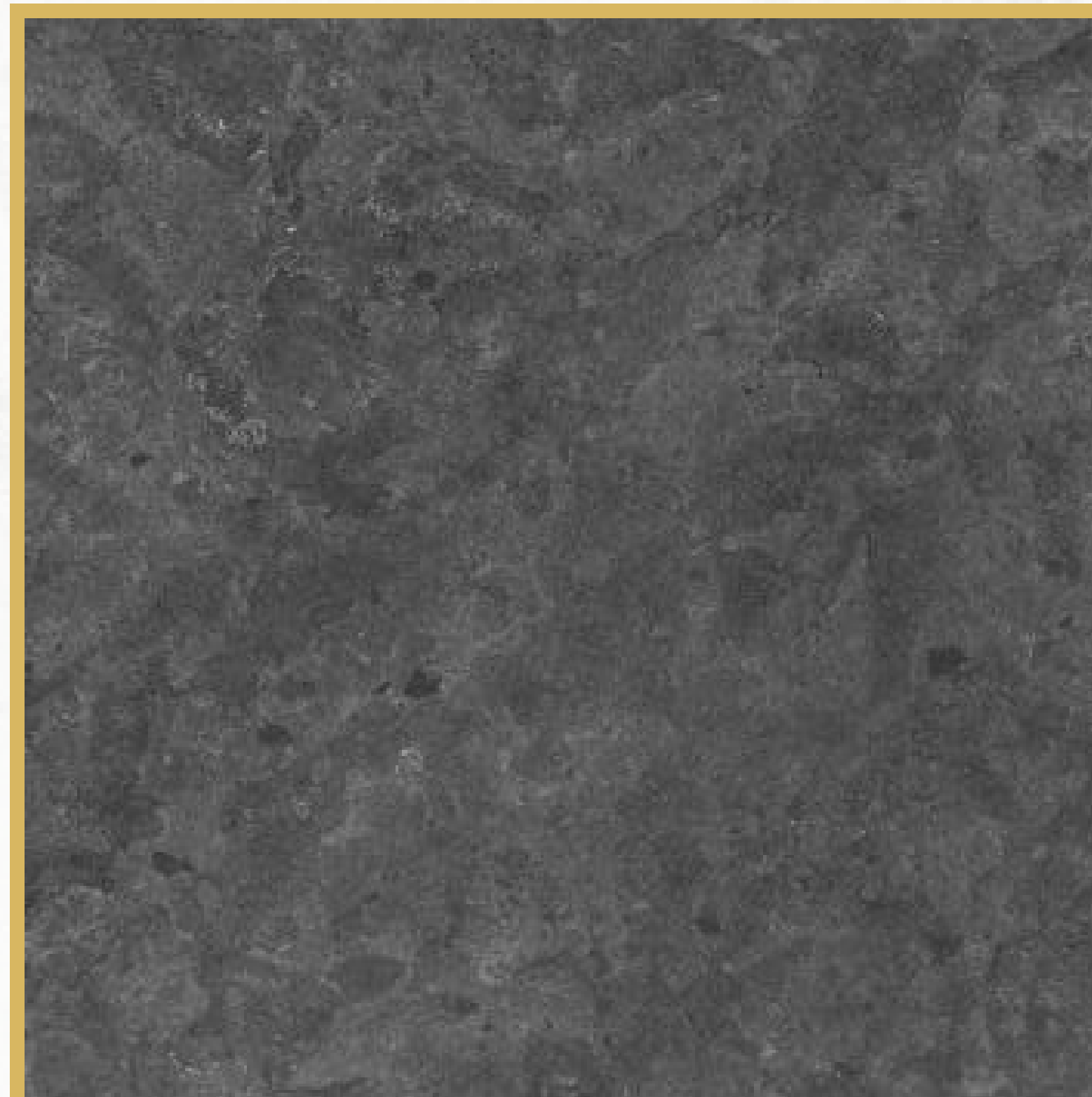
Samaha Light



Katreen



Khatmya Leathered



Dark Grey



Khatmya Light

Standard sizes for all Marble and granite. (60cm*60cm*3cm) (60cm*60cm*2cm)
Wall recommended sizes (90cm*60cm*3cm) (120cm*90cm*3cm)

Materials

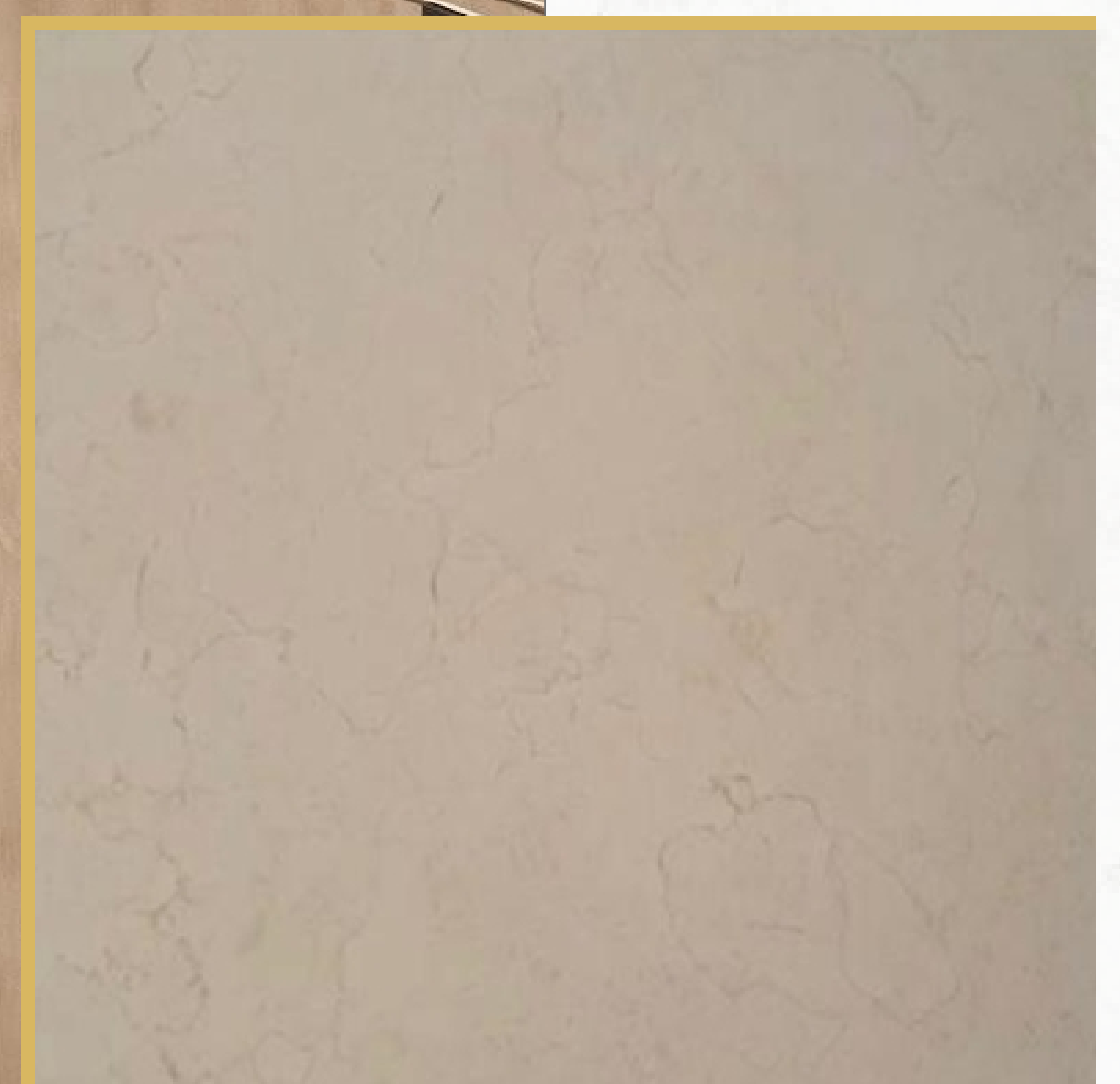
Marble



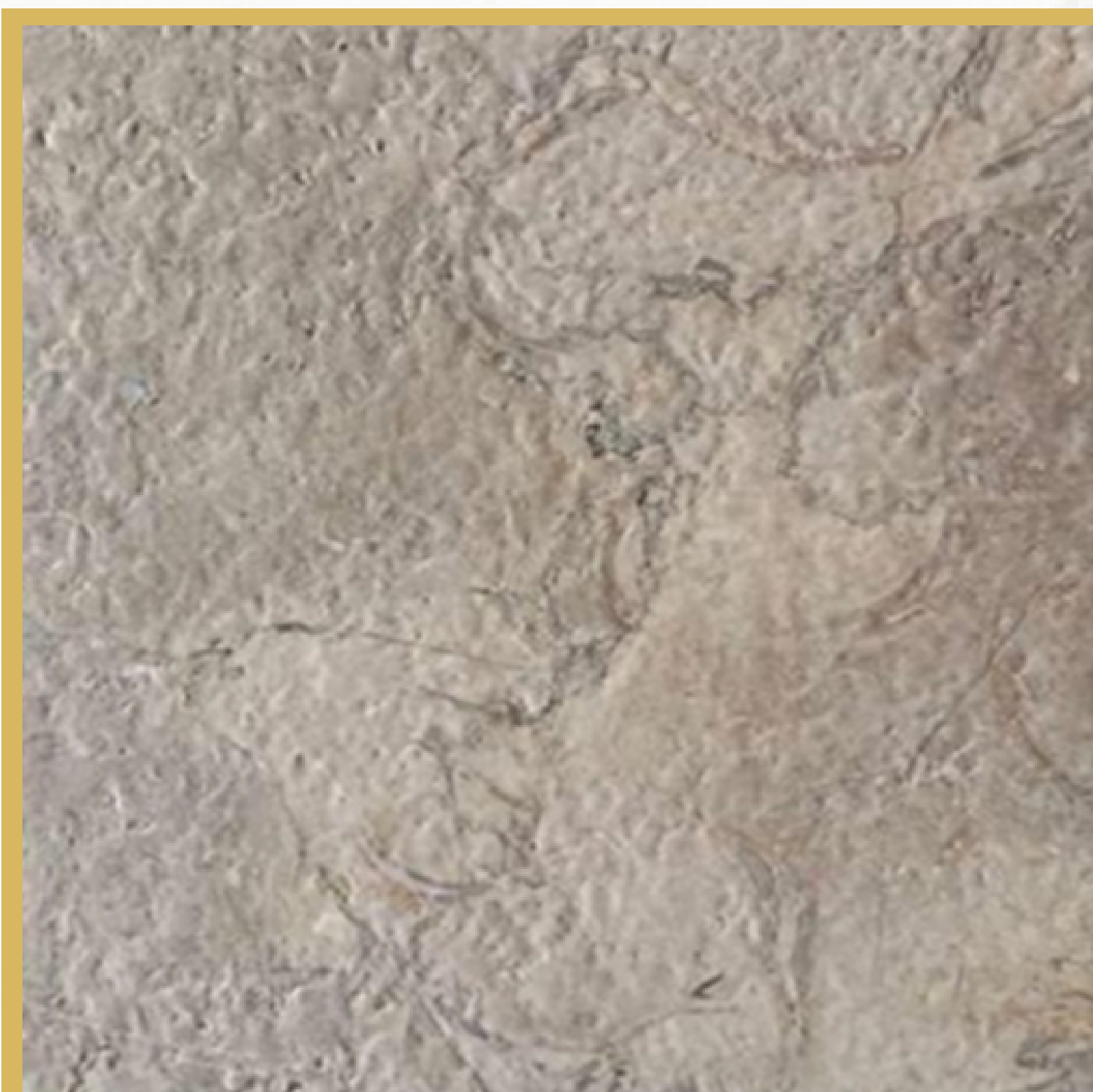
75 SQUARE
STUDIO
ARCHITECTURE & DESIGN



Desert



Golden Cream



Melly Brown Leathered



Zafarana Flower



Zafarana Rose Silvia

Standard sizes for all Marble and granite. (60cm*60cm*3cm) (60cm*60cm*2cm)
Wall recommended sizes (90cm*60cm*3cm) (120cm*90cm*3cm)

Materials

Marble



Crema Sienna



Melly Grey



Feleto Acid



Galala Extra

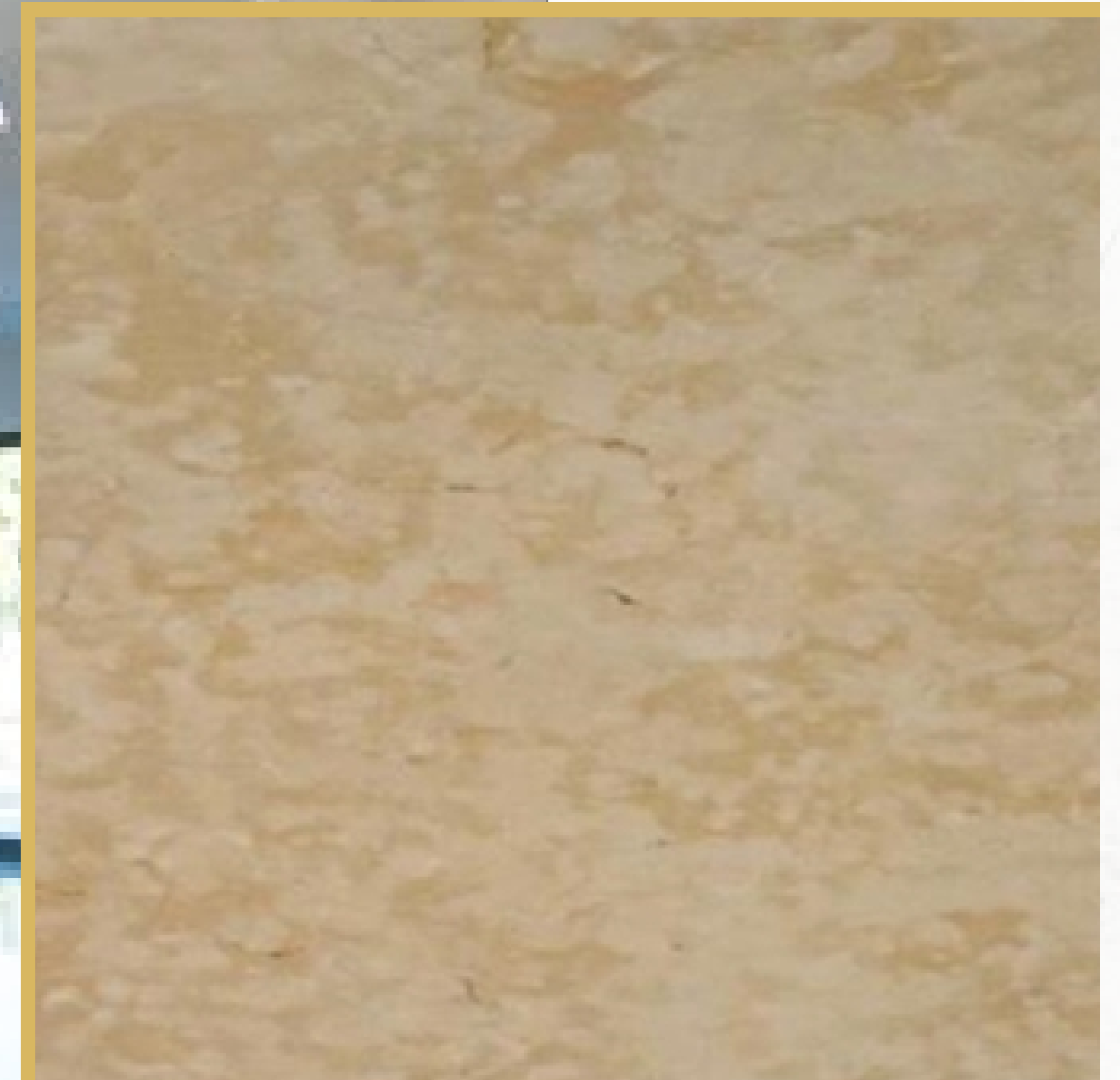
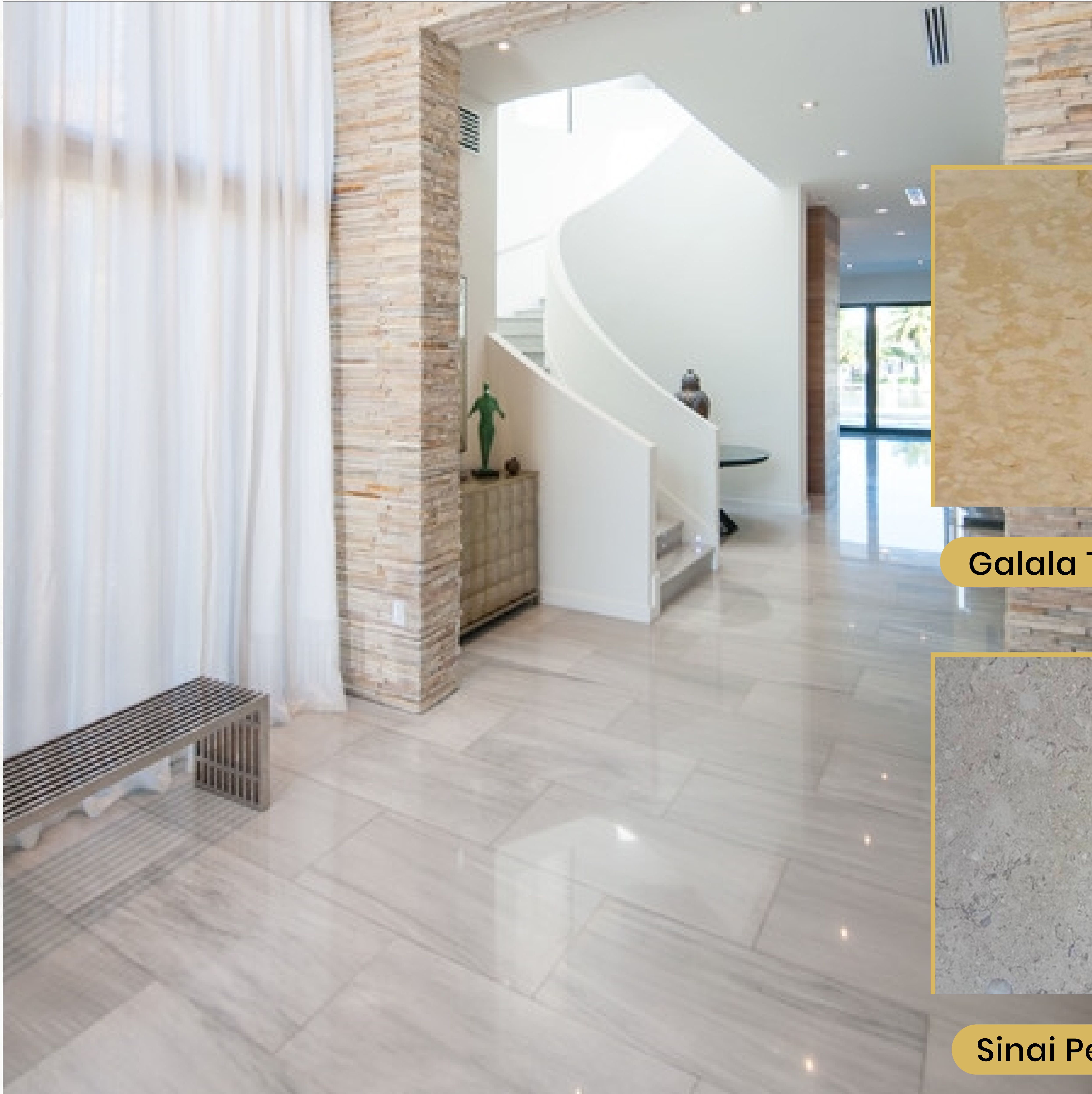


Galala Cream

Standard sizes for all Marble and granite. (60cm*60cm*3cm) (60cm*60cm*2cm)
Wall recommended sizes (90cm*60cm*3cm) (120cm*90cm*3cm)

Materials

Marble



Galala Tiger Skin



Sinai Pearl Light



Sinai Pearl Beige



Sinai Pearl

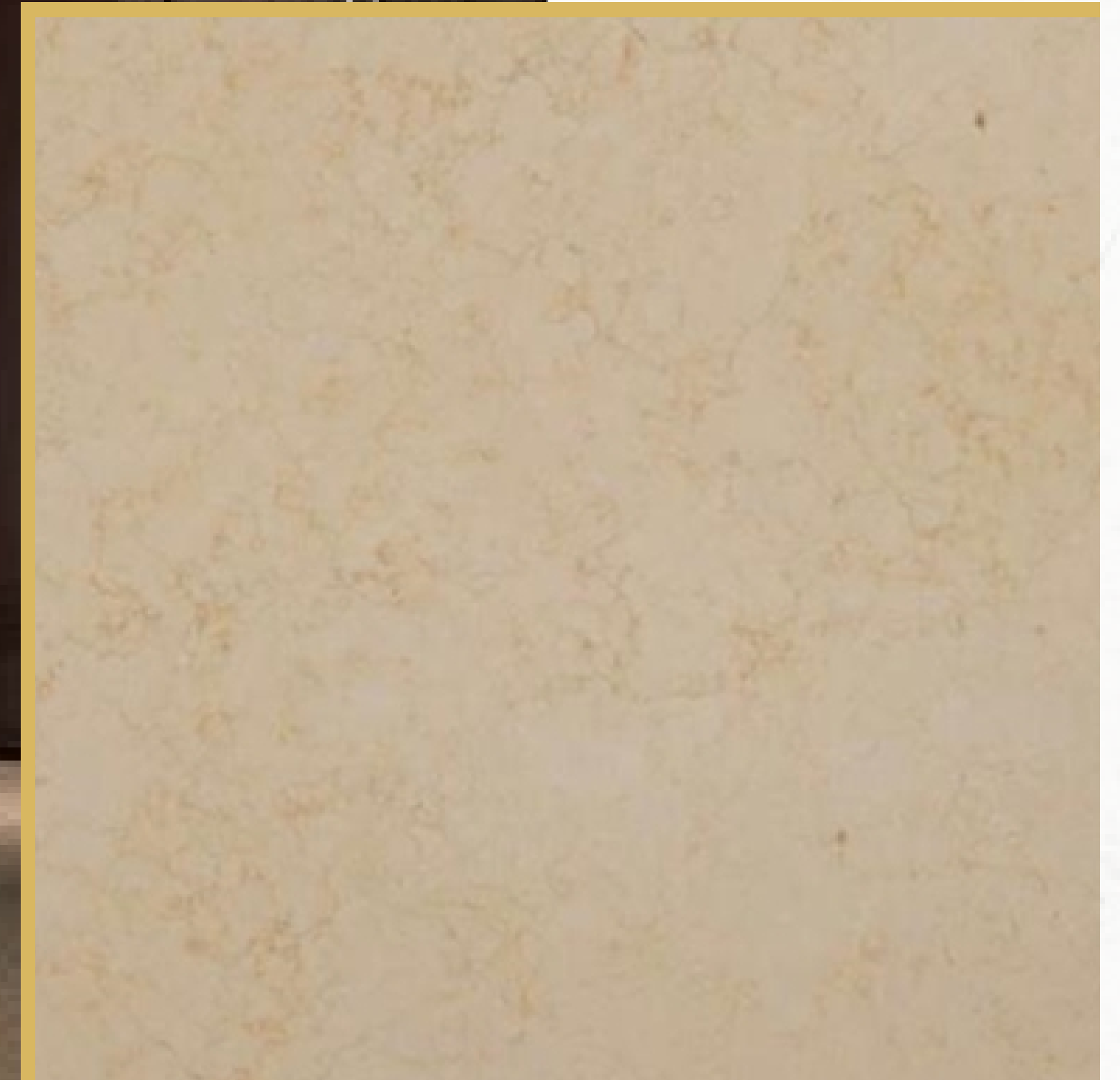


Sunny Dark

Standard sizes for all Marble and granite. (60cm*60cm*3cm) (60cm*60cm*2cm)
Wall recommended sizes (90cm*60cm*3cm) (120cm*90cm*3cm)

Materials

Marble



Sunny Light



Sunny Medium



Crema Novelda



Silvia



Feleto

Standard sizes for all Marble and granite. (60cm*60cm*3cm) (60cm*60cm*2cm)
Wall recommended sizes (90cm*60cm*3cm) (120cm*90cm*3cm)

Materials

Marble



Silvia Menia



Sinai Pearl Dark
(Jerusalem Grey)

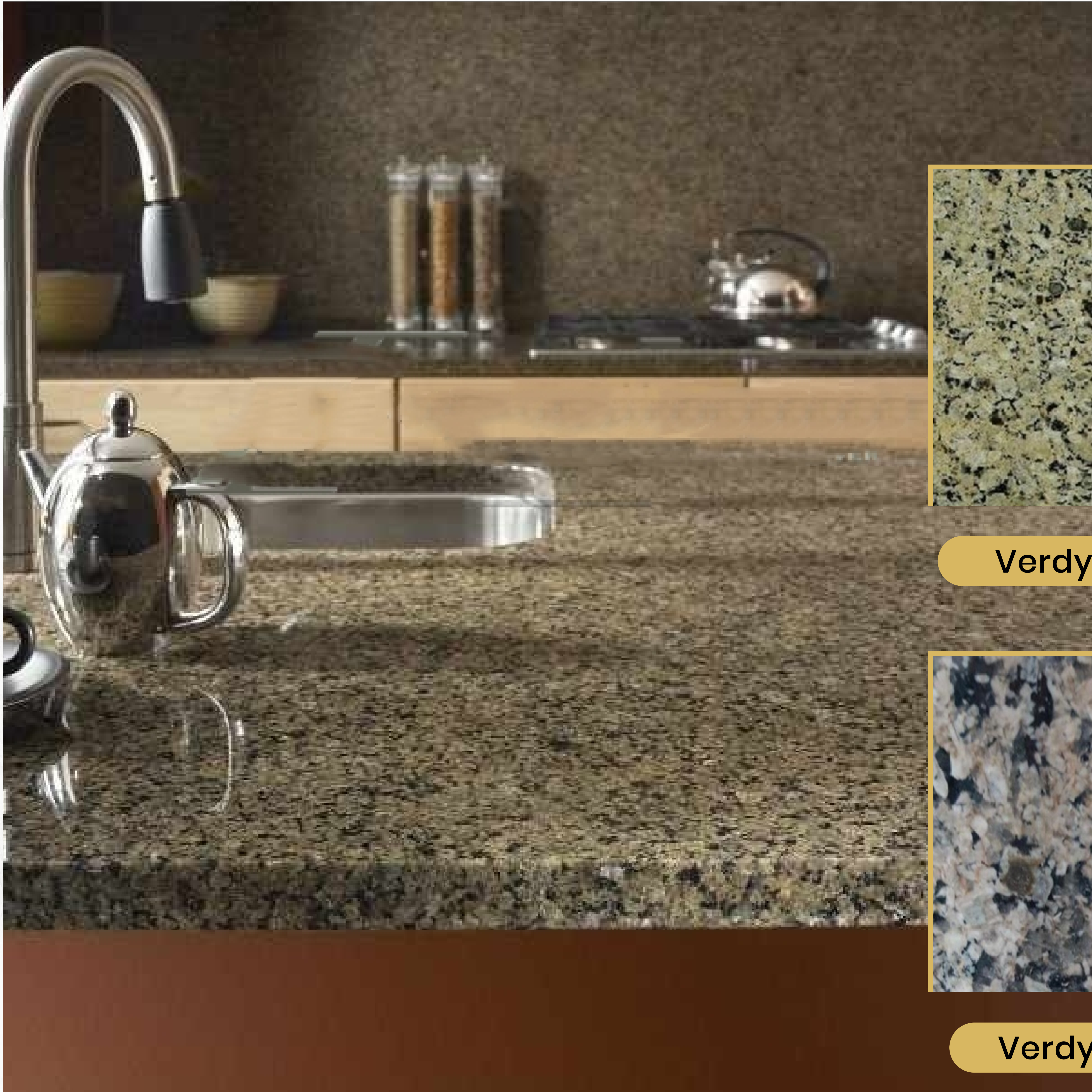


Crema Novelda Fas

Standard sizes for all Marble and granite. (60cm*60cm*3cm) (60cm*60cm*2cm)
Wall recommended sizes (90cm*60cm*3cm) (120cm*90cm*3cm)

Materials

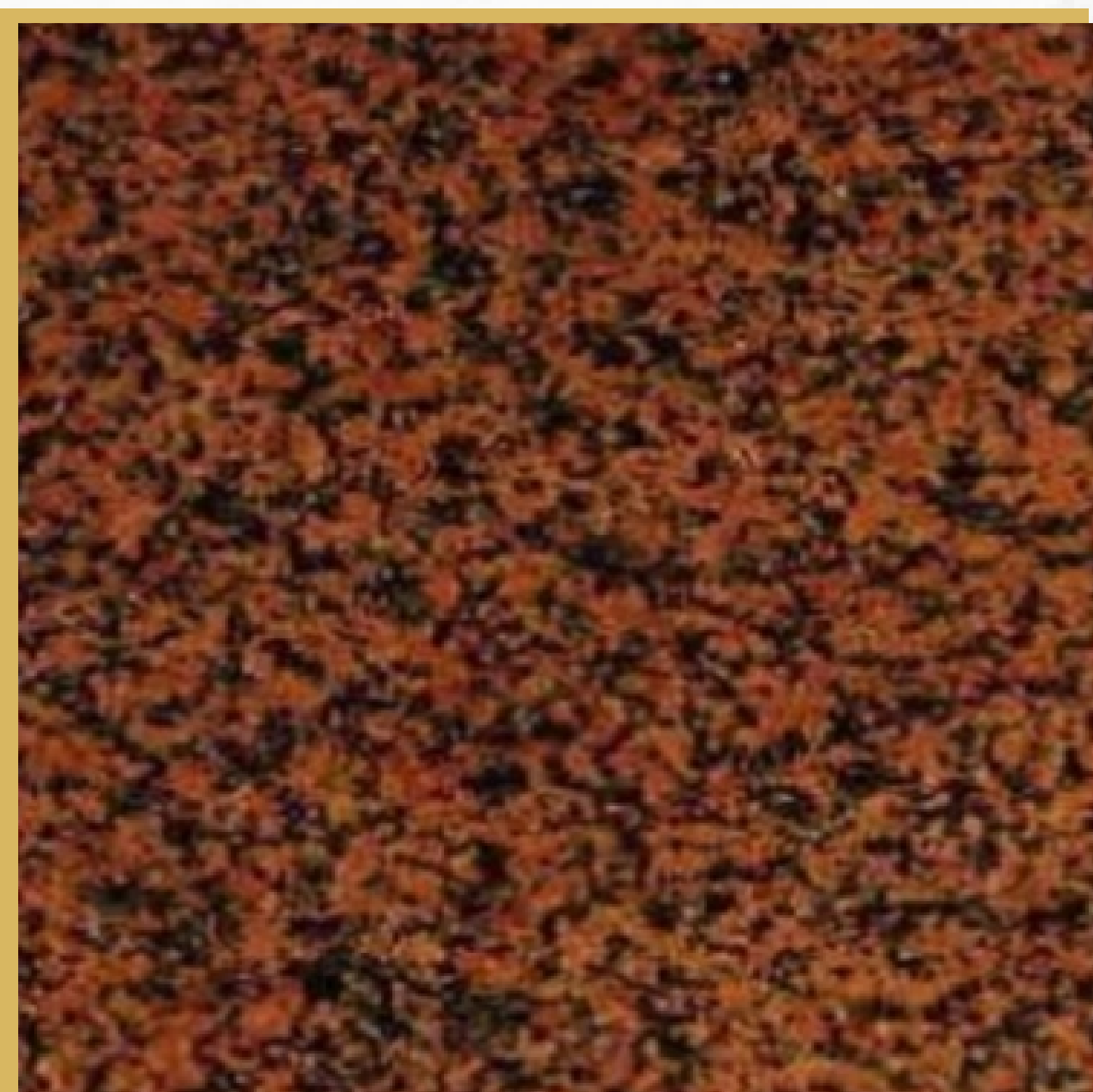
Granite



Verdy Yellow



Verdy Green



Red Hurgada



Royal Red



Red Forsan

Standard sizes for all Marble and granite. (60cm*60cm*3cm) (60cm*60cm*2cm)
Wall recommended sizes (90cm*60cm*3cm) (120cm*90cm*3cm)

Materials

Granite



Black Aswan



Gandola Light



Red Aswan



Rosa Hody



Grey El Sherka

Standard sizes for all Marble and granite. (60cm*60cm*3cm) (60cm*60cm*2cm)
Wall recommended sizes (90cm*60cm*3cm) (120cm*90cm*3cm)

Materials

Granite



New Halayeb



Gandola



Rosa El Nasr



Halayeb

Standard sizes for all Marble and granite. (60cm*60cm*3cm) (60cm*60cm*2cm)
Wall recommended sizes (90cm*60cm*3cm) (120cm*90cm*3cm)

Materials

Imported



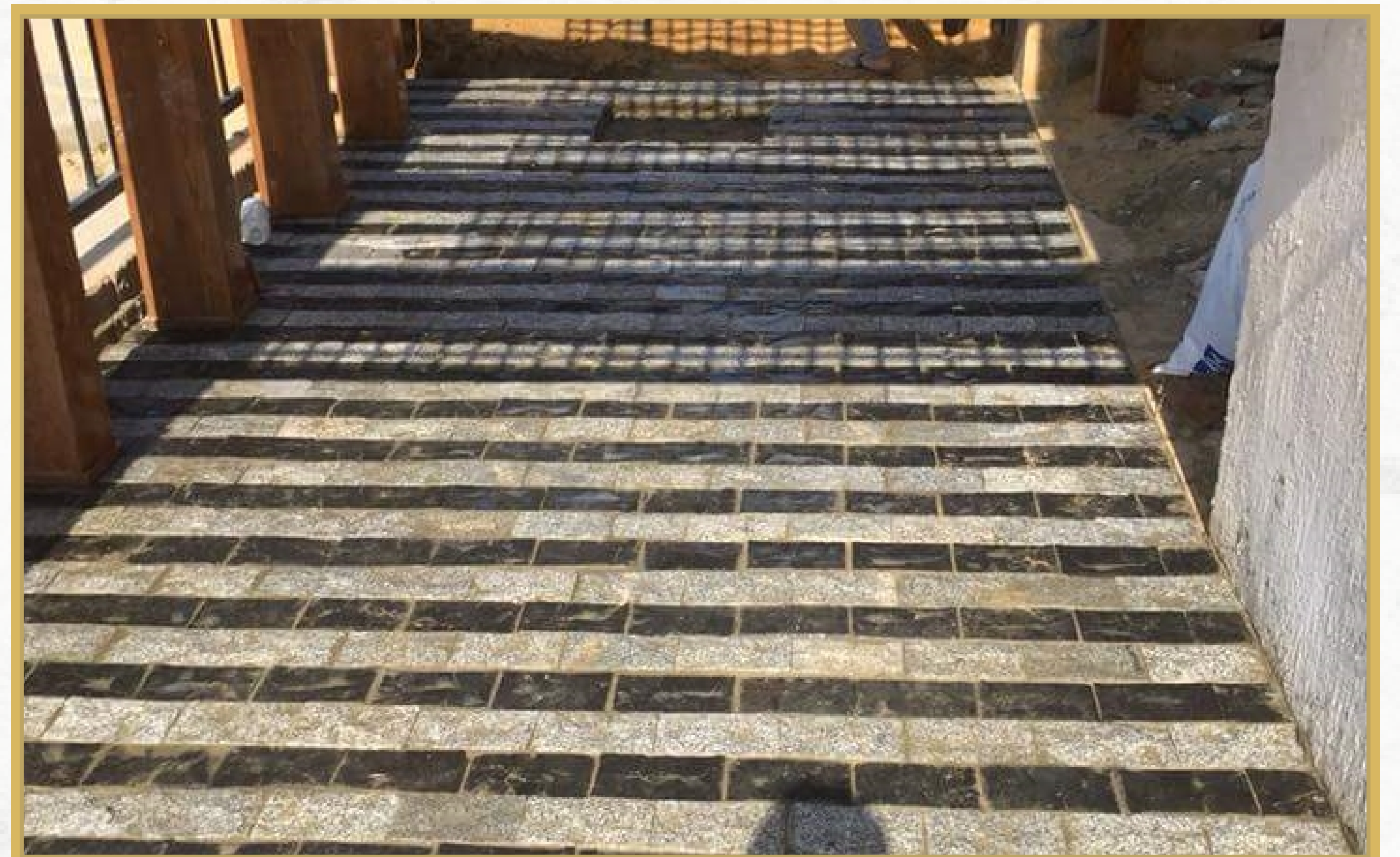
Famous Italian white Color is available
All Chinese colors also are available

Standard sizes for all Marble and granite. (60cm*60cm*3cm) (60cm*60cm*2cm)
Wall recommended sizes (90cm*60cm*3cm) (120cm*90cm*3cm)

Materials

Basaltstone

Note : Egyptian basalt is only black
But granite can be cut in the same shape



Vietnamese Basalt

Finishes

Types



Groove



Honed



Polished



Sandblasted



Split Face



Tumbled

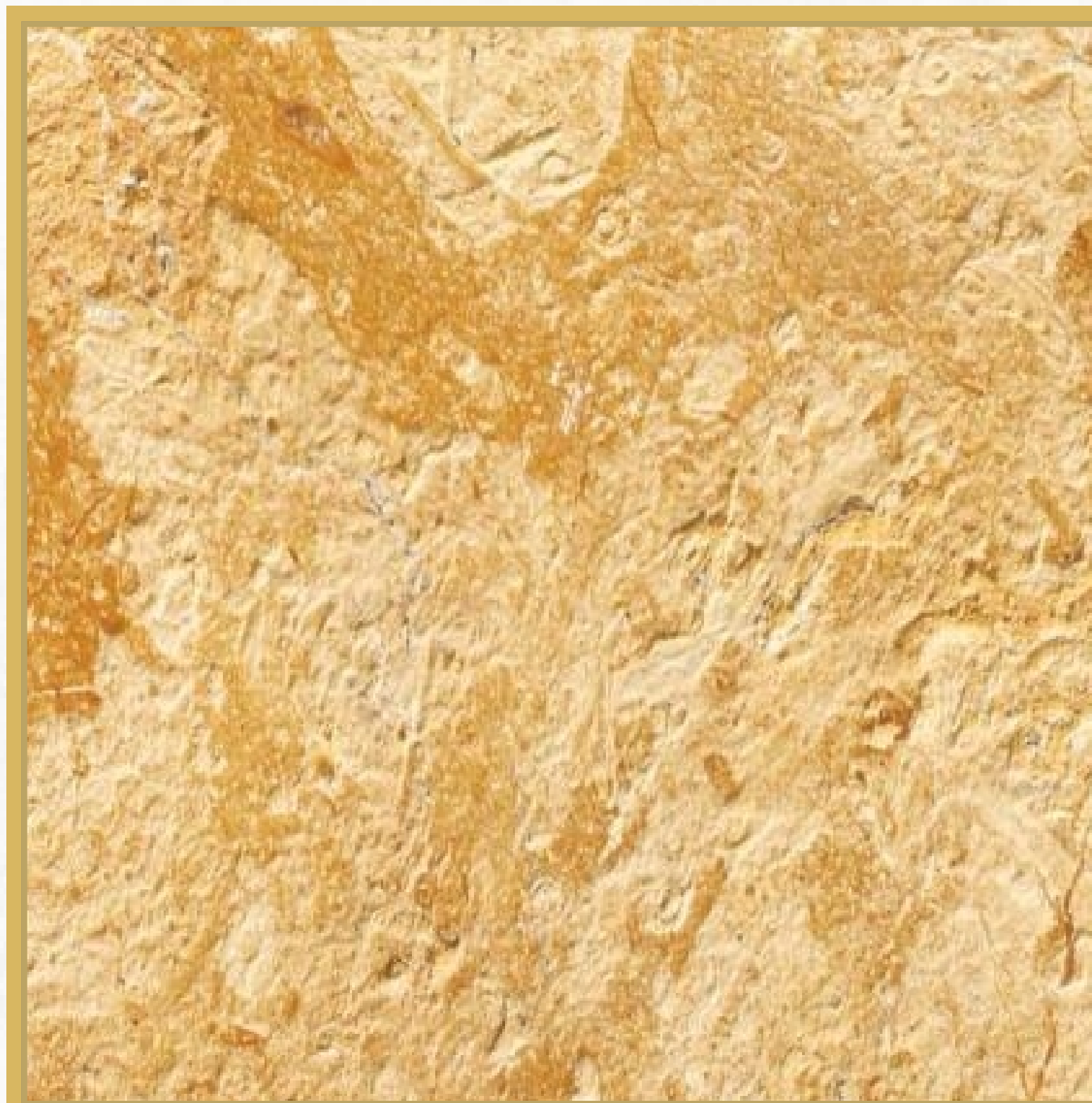
Standard sizes for all Marble and granite. (60cm*60cm*3cm) (60cm*60cm*2cm)
Wall recommended sizes (90cm*60cm*3cm) (120cm*90cm*3cm)

Finishes

Types



Acid Wash



Antique



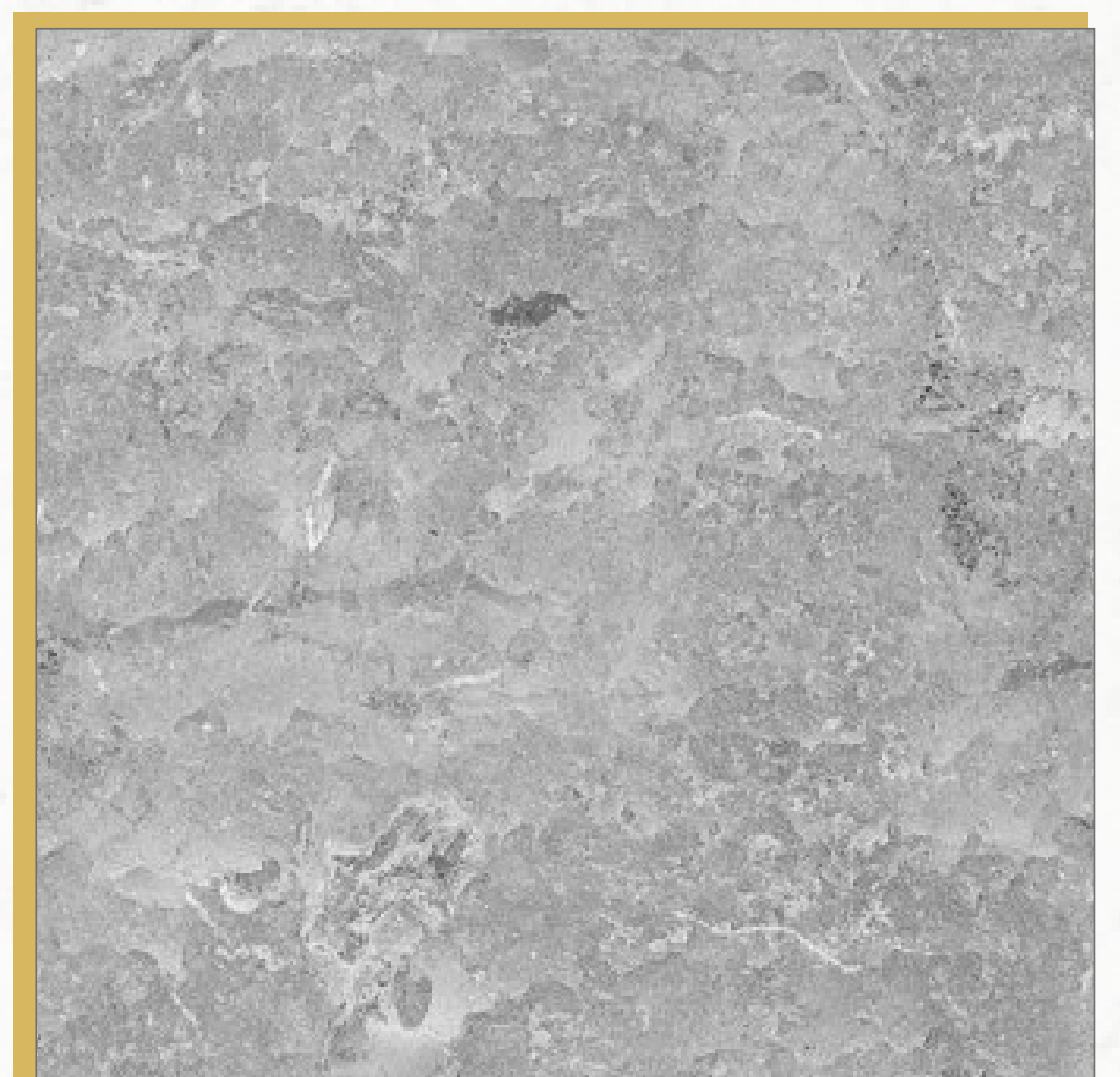
Brushed



Bush Hammered



Edge



Flamed

Standard sizes for all Marble and granite. (60cm*60cm*3cm) (60cm*60cm*2cm)
Wall recommended sizes (90cm*60cm*3cm) (120cm*90cm*3cm)

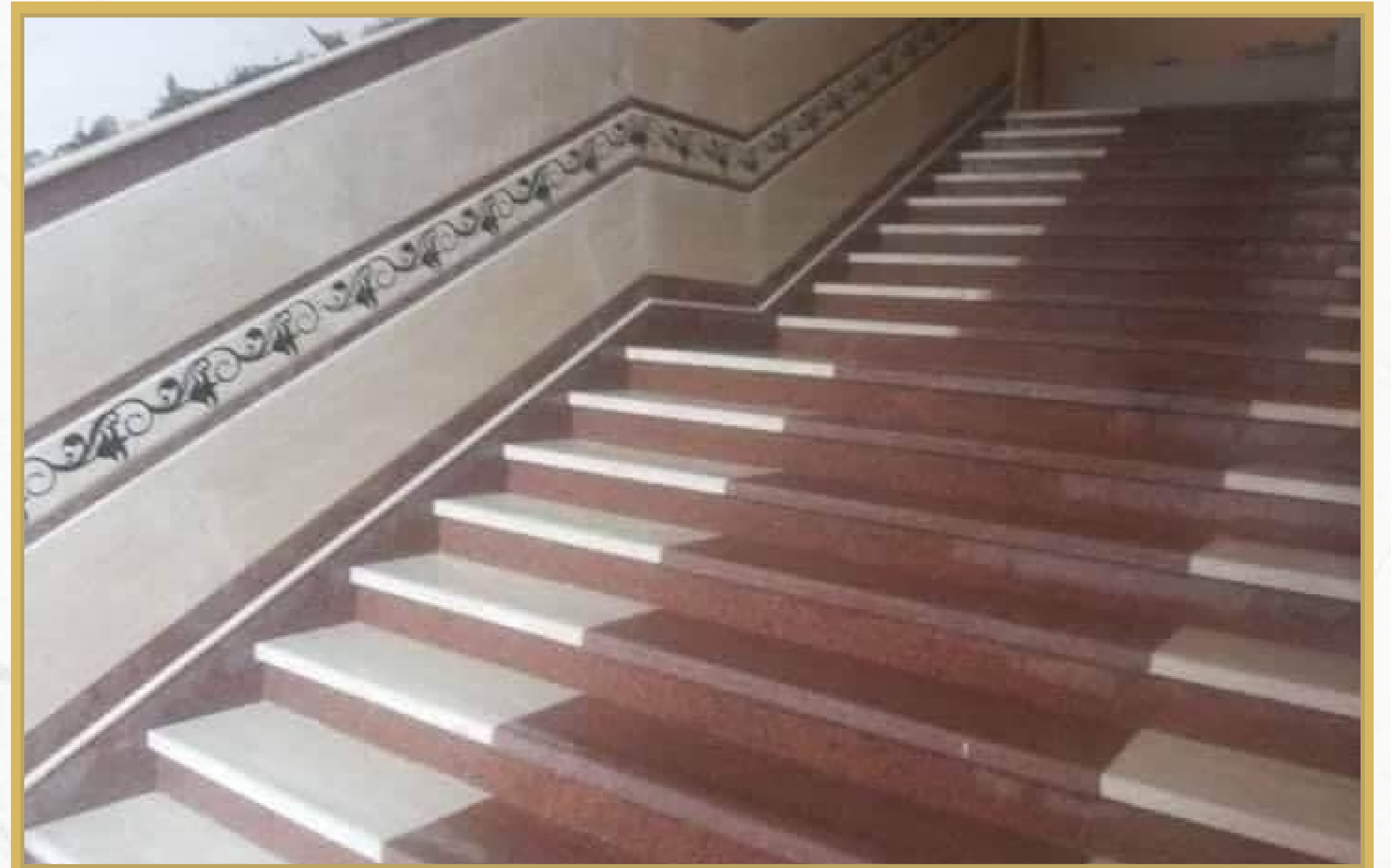
Projects

Entrance



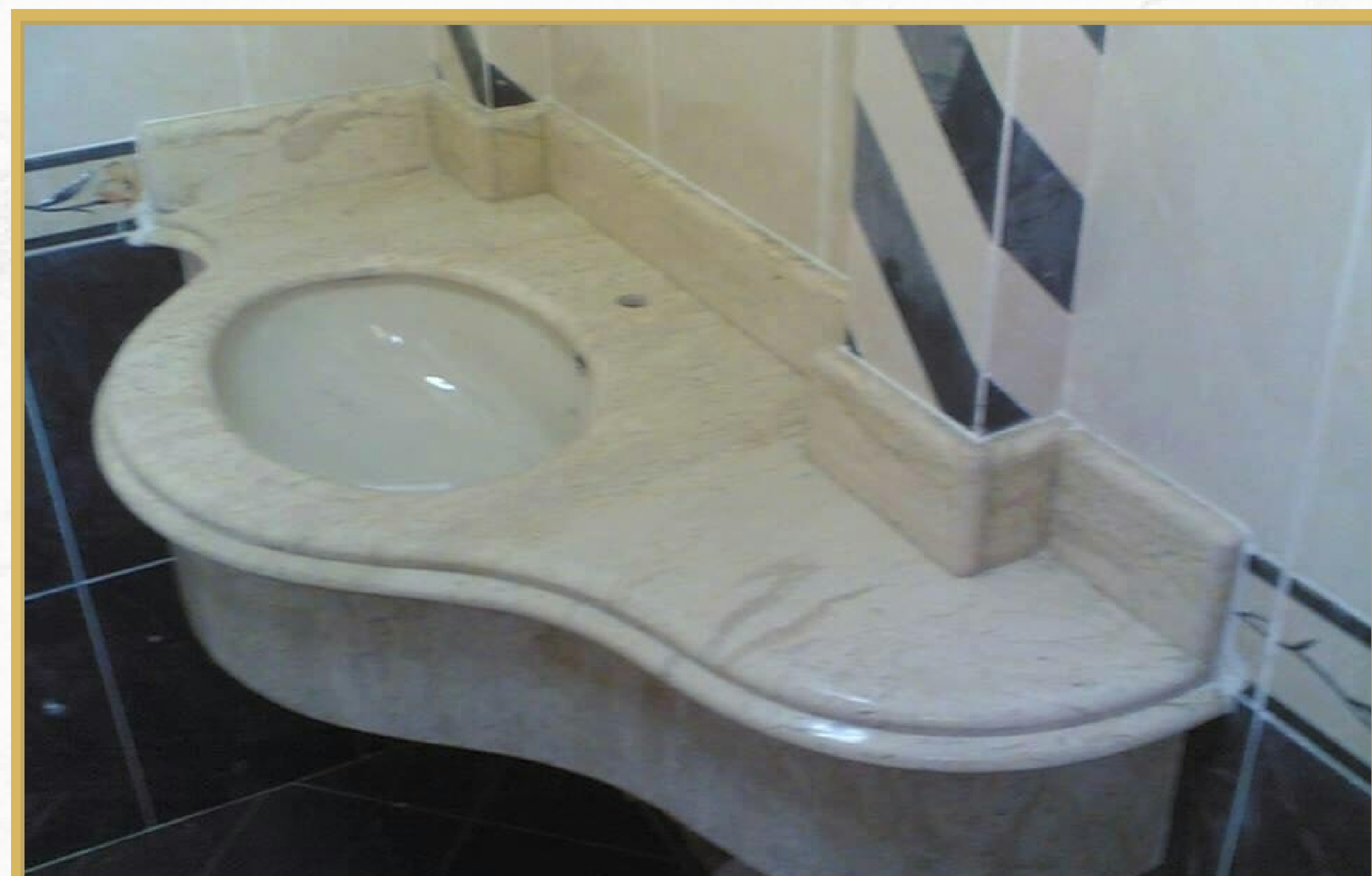
Projects

Stairs



Projects

Bathrooms



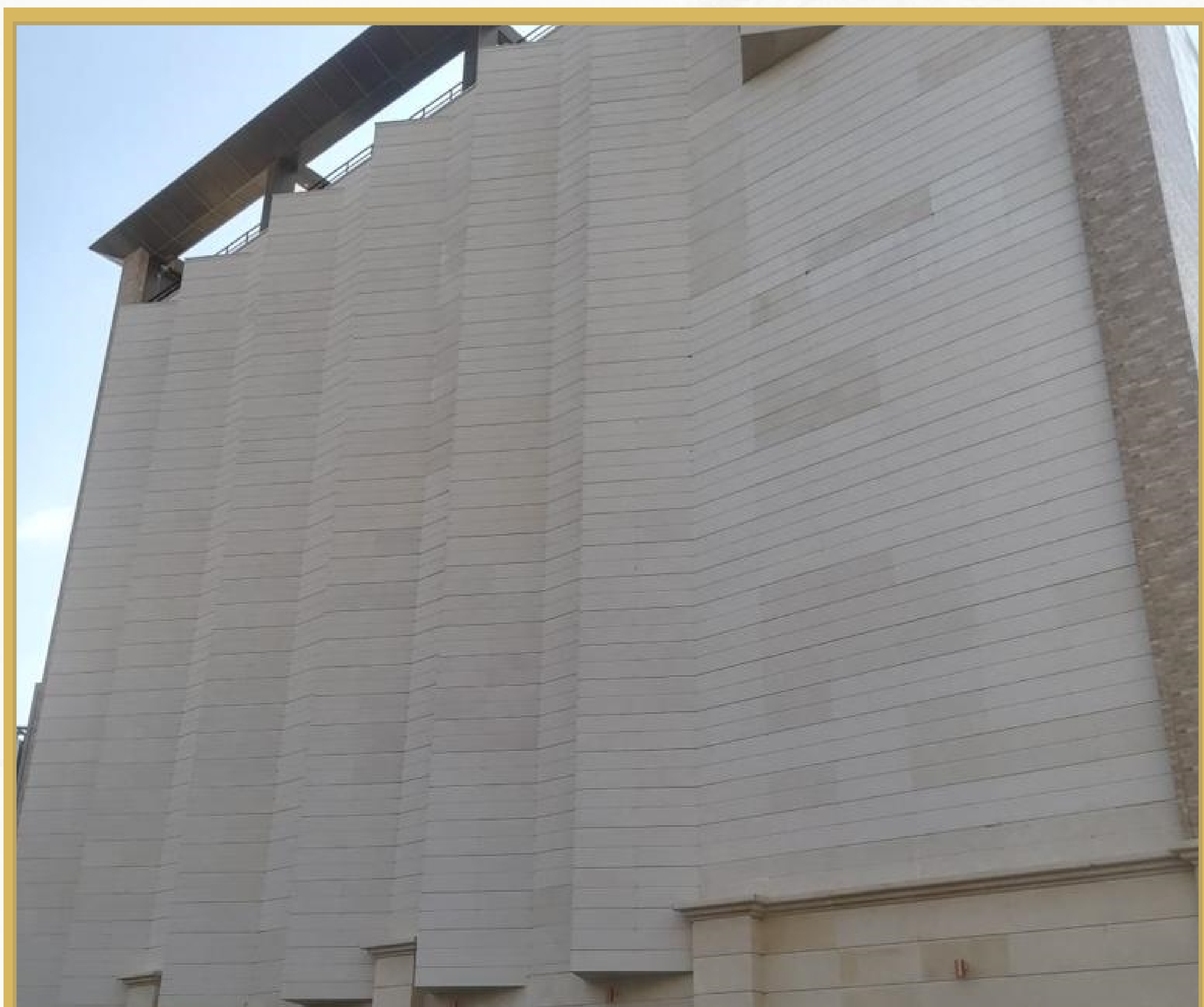
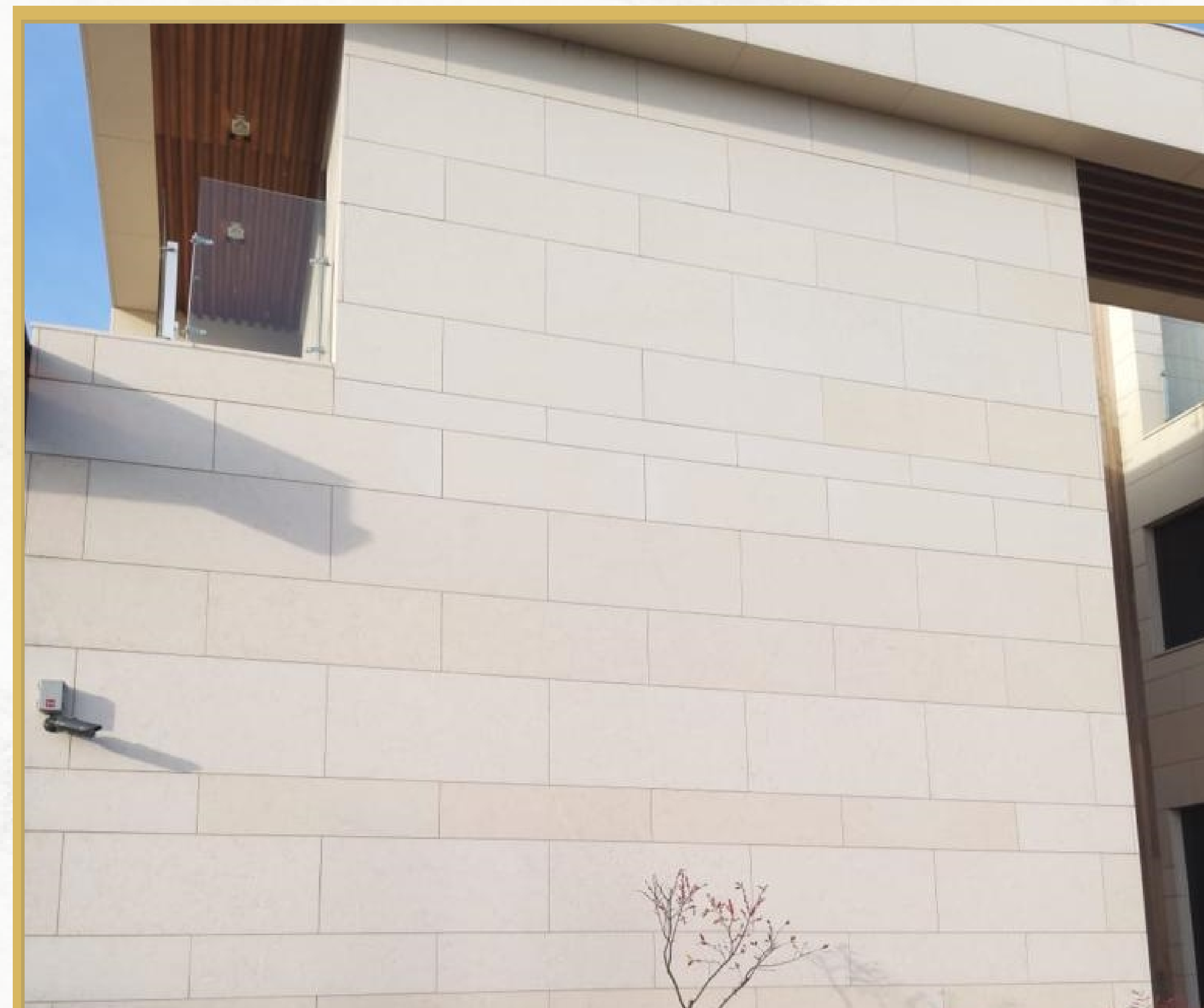
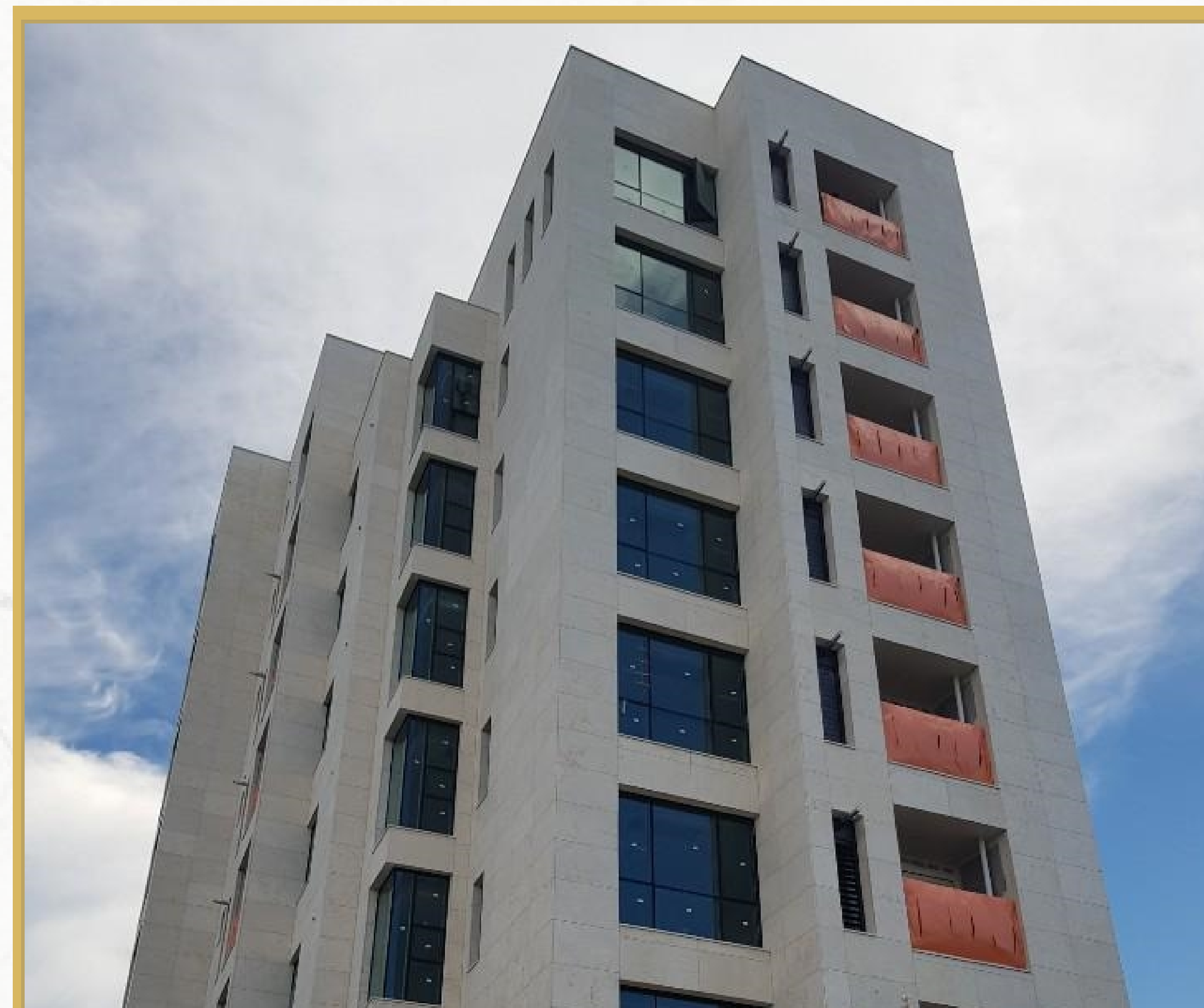
Projects

Kitchens



Projects

Export Records



Packing



Blocks Outside Container



Blocks Inside Container



Slab Packing Pallets



Tiles Wooden Crates



Tiles Wooden Pallets

1- Premium Packing : Strong wood boxes + PVC paper between slabs + Stretch Rolls on boxes for safety.

2- Bundles with Stretch Rolls + PVC Paper.

Keep In Touch



+02-0111 1952 079

+02-0114 1243 400



www.3mstone.com



Operations@3mstone.com

Muhammed.abdelrhim@gmail.com

Mahmoud.abdelrehem007@gmail.com